



M S M

MASTER OF SCIENCE IN MANAGEMENT

2020 EMPLOYMENT REPORT

...ING STUDENTS A
... WORLD EXPER
... THAT ALLOW THEM
... EXPERIENTIAL
... LEARNING
... ON THE
... FRONT LINES

... GROW INVEST
... NG THE GOOD HEA
... NT IN BUSINESS™
... ARE CORPORATE
... ING TEA



GROW
THE GOOD
IN BUSINESS™

JOHN ROONEY

**DIRECTOR, GRADUATE BUSINESS
CAREER DEVELOPMENT**



“Although this has been a very challenging year, I have never been more proud of the Notre Dame family and our outstanding recruiting partners. Our students demonstrated great resilience in their career development and job searches. They continued to demonstrate why many of the world’s top companies come to Notre Dame to connect with our talented and experienced students. I also want to thank our dedicated alumni base that is always instrumental in helping our students obtain careers that allow them to grow the good in business. We continue to work closely with our recruiting partners during this challenging time and are optimistic about the marketplace and Notre Dame’s historical success in achieving strong outcomes.”

Notre Dame’s Mendoza College of Business is uniquely positioned to develop leaders dedicated to growing the good in today’s business world. This employment report represents our students’ hard work — these future leaders — put into their career development, creating opportunities that leverage their strengths, experiences, and values to maximize positive impact.

▶ PERCENT OF STUDENTS WITH FULL-TIME OFFER WITHIN SIX MONTHS OF GRADUATION:

Class of 2020

85.3%

▶ MEDIAN SALARY AND BONUS FOR GRADUATING CLASS:

Class of 2020

\$65,630

Featured Employers

Deloitte.

Epic

HERSHEY
THE HERSHEY COMPANY



Morgan Stanley

ORACLE®

PPD®

Location Choices - United States

REGION	PERCENT ACCEPTS	MEDIAN SALARY
MID-ATLANTIC	4.2%	I/D
MIDWEST	29.2%	\$60,500
NORTHEAST	20.8%	\$62,500
SOUTH	8.3%	I/D
SOUTHWEST	8.3%	I/D
WEST	16.7%	\$65,500

Compensation By Industry

INDUSTRY	PERCENT ACCEPTS	MEDIAN SALARY
CONSULTING	8.00%	I/D
CONSUMER PACKAGED GOODS	8.00%	I/D
FINANCIAL SERVICES	16.00%	\$75,000
HEALTHCARE (Including Products and Services)	24.00%	\$67,000
NON-PROFIT/EDUCATION	4.00%	I/D
ENERGY	4.00%	I/D
RETAIL	4.00%	I/D
TECHNOLOGY	8.00%	I/D
OTHER	24.00%	\$51,523

Compensation By Function

FUNCTION	PERCENT ACCEPTS	MEDIAN SALARY
CONSULTING	7.70%	I/D
FINANCE/ACCOUNTING	11.50%	I/D
GENERAL MANAGEMENT	7.70%	I/D
HUMAN RESOURCES	3.80%	I/D
MARKETING/SALES	15.40%	\$45,000
OPERATIONS/LOGISTICS	3.80%	I/D
INFORMATION TECHNOLOGY	11.50%	I/D
OTHER	38.50%	\$60,000

I/D refers to instances with insufficient data.

CONTACT US

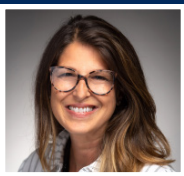
Email: msm.business@nd.edu
(574) 631-8488

Ready to apply?

Want to learn even more?

Visit us online:

mendoza.nd.edu



Mindy Evans

Employer Relations Program Manager
Graduate Business Career Development
W528 Duncan Student Center
Notre Dame, IN 46556
(574) 631-5575
Email: mevans8@nd.edu

MENDOZA COLLEGE
OF BUSINESS



UNIVERSITY OF
NOTRE DAME



AACSB
International
Accredited